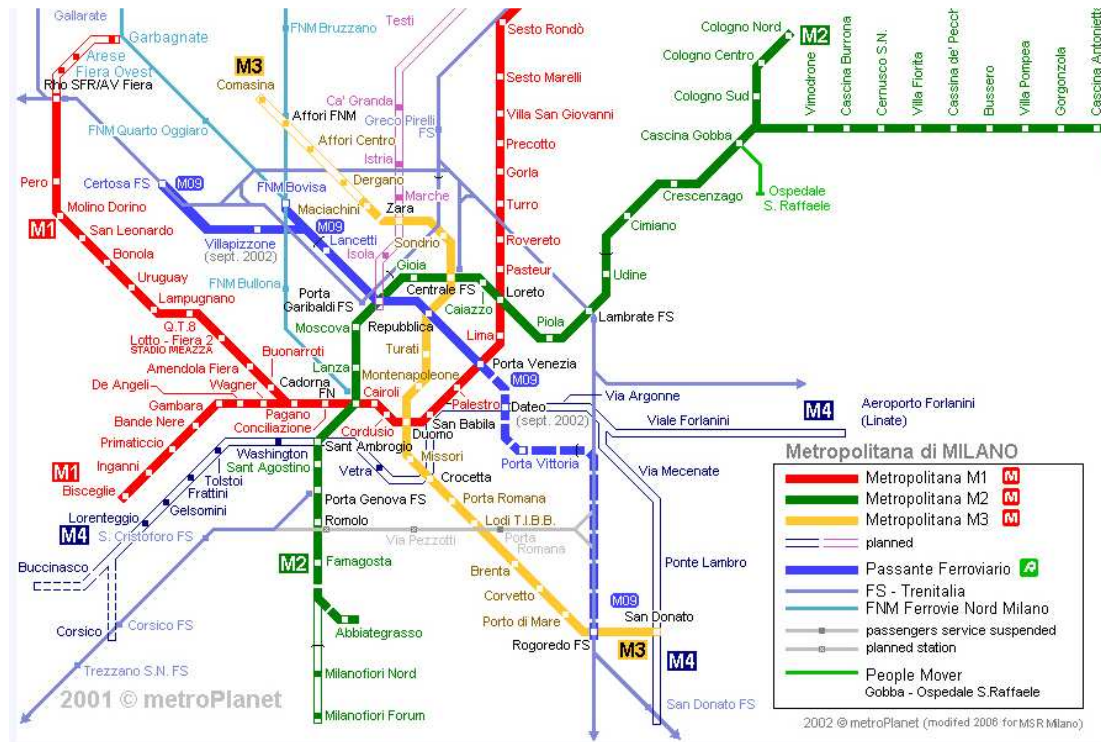


Milan Metro Projects

In the last decade city of Milan has expanded its metro lines and built new ones. TECON has developed many detailed projects for the main Milan Metro lines.



Main projects:

- Line 1 “Prolungamento Molino Dorino – Rho Fiera
- Line 2 “Prolungamento : Famagosta - Assago - Milanofiori forum
- Line 3 “Prolungamento verso Comasina – Affori Centro e Affori Nord
- Line 5 “Costruzione Stazioni: Bignami, Zara, Deposito
- Line Nord “Collegamento FNM – Saronno - Malpensa

Services:

- Detailed design of all the earth retaining structures made up by anchored slurry walls and micropiles
- Detailed design of the anchoring and strut systems
- Detailed design of all the station and well reinforced concrete structures
- Detailed design of all the temporary steel bridges and decks
- Bar bending sheets
- Assistance to Contractors during execution
- Assistance to Contractors and Owner during commissioning

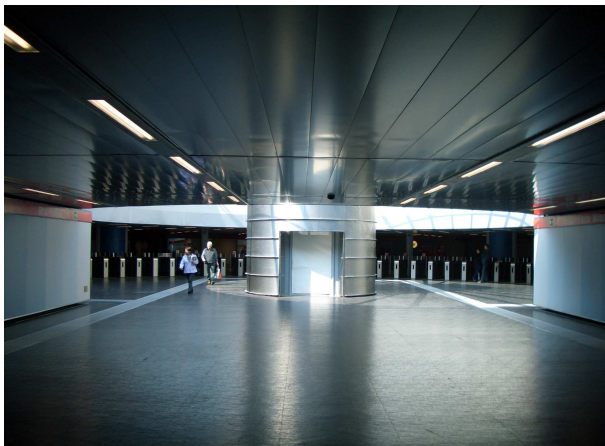
Line 1



Line 1 – Station of RHO
Large architectural roof opening



Line 1
TBM passing in PERO station



Line 1 – Station of RHO
Large architectural roof opening completed



Line 1
FIORENZA well – TBM starts slab

Line 2



LINE 2
Concrete caisson gallery 70m long
pushed under highway



LINE 2
Concrete caisson gallery –
pushing from back with jacks



LINE 2
Pedestrian bridge over the highway
Overall view



LINE 2
Pedestrian bridge over the highway
Details

Line 3



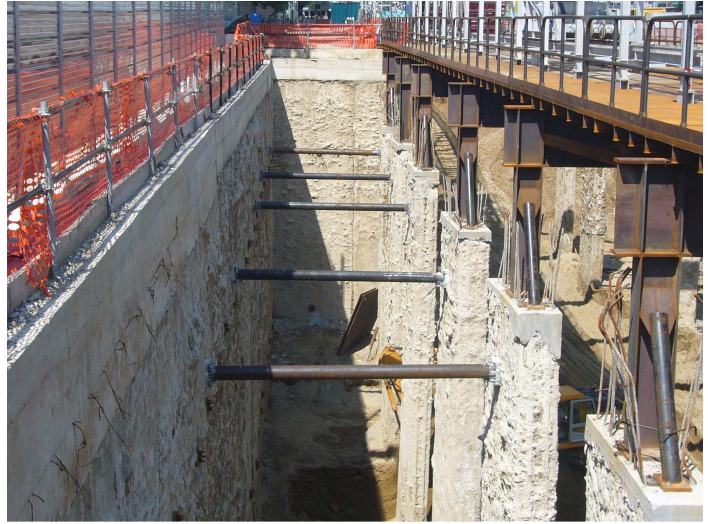
Line 3

Concrete caisson gallery pushed under railway

Line 5



Line 5
Slurry concrete diaphragm
connecting rebars to deck



Line 5
BIGNAMI station - temporary steel deck



Line 5
Prefabricated steel/concrete beams
"REP" system



Line 5
BIGNAMI station – mezzanine deck